



Brockville Museum

The case for relocation and expansion

Mandate:

The Brockville Museum is committed to preserving and promoting the history of Brockville through continuing quality exhibits and education programs. The museum activities are strongly supported by an expanding collection of related artifacts and archival material. The Brockville Museum grows with, and for the community, providing a source of knowledge on the heritage of Brockville for present and future generations.

Services:

- Care for a collection of over 7,500 Brockville artifacts, and over 30,000 documents and photographs; the collection grows by about 350 objects each year
- Handle over 100 research requests annually
- Deliver over 200 programs annually
- Present a robust schedule of changing temporary and travelling exhibits



About Us

Brockville's history is one of prominent manufacturers, formidable wealth, fascinating historical figures, and vivacious ordinary people all interconnected by a dynamic river.

Our Challenges

Our current building is not suitable as a museum



1973: Central Canada Coal Company (since 1897)



1988: Brockville Museum (since 1981)



2018: Brockville Museum (Carriage Hall addition added in 1995)

- Beecher House built c1820 & c1840, used by Central Canada Coal Company from 1897-c1980; retrofitted to house museum in 1981; addition added in 1995.
- Out of space (again) – issue identified dating back to 2002
 - Over-full and inadequate collection storage
 - Threatens preservation of objects in our care
 - Limits our ability to accept new items
 - Lease of a 2,000 sq ft storage facility for larger items in 2003 – now full
- Inadequate space
 - Too small to get average size travelling exhibits
 - Turning exhibit spaces into storage spaces
 - Unable to maintain temperature and relative humidity levels to ensure the preservation of the collection
- Flooding
 - Basements located below water table

Collection Storage

- In 2003 off-site storage space was leased to accommodate larger objects and the growing collection
- In 2010 and again in 2014, existing exhibit spaces were turned into collection storage rooms to meet need



Archival (photo & paper) Storage



Textile & Art Storage: in attic space



Over-flow Archival (mostly negatives) Storage: in former exhibit space



On-Site Object Storage: in basement



Off-Site Storage



Off-Site Storage

Exhibits and Programming Spaces



Carriage Hall (1995 Addition): Event and Program Space in addition to exhibition space for cars and carriages



Classroom (1995 Addition Basement)



"Travel Trunk: Unpacking Brockville's Cultural Stories"



"Brockville's River Story"



"People of Brockville"



"Blockhouse Island & the Tunnel"

Temporary/Travelling Exhibit Space

- We have 392 sq ft; even the smallest travelling exhibit assumes a minimum 500 sq ft



Painting Picnic with Prudence Heward: July-October 2020



Pieces of Brockville: March 2018-April 2019



Seeds in Disguise (Travelling): February-May 2016



My Story, My Tattoo (Travelling): May-September 2019



Our Agricultural Past: September-December 2019



Our Sporting Past: July-September 2016

Genealogical Society & Museum Flooding

- The Leeds & Grenville Branch of the Ontario Genealogical Society is located in two of the museum's (dugout) basements (in Beecher House)
- 2019 Facility Assessment by City determined that “The basement is not an optimal location for the genealogical office and records storage. This area will always have moisture and humidity, which can lead to mold problems.”



Genealogical Society Storage



Genealogical Society Library



Genealogical Society Storage

Genealogical Society & Museum Flooding (continued)

- The 1995 basement is also prone to water penetration



Collection Storage Room, October 2019



Classroom, October 2019

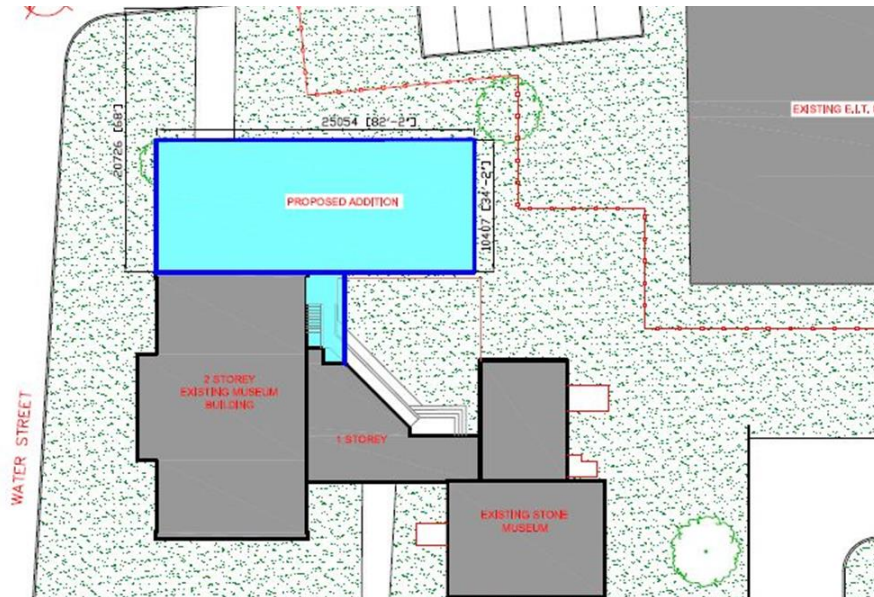


Emergency Exit, February 2018

Our Challenges

Inadequacies of the current museum site

- Poor layout with small spaces
 - Three different buildings:
 - Three different basements below the water table – prone to flooding
 - Five different HVAC systems – not providing adequate relative humidity controls
- the current lot size is insufficient to address expansion needs
 - 2011 Expansion Feasibility Study: offered expansion option to double exhibit space (from 3200 sq ft to 6300 sq ft) and programming space, and nearly double onsite storage space, but did not provide any large object storage or exhibit space (i.e. fire truck).
 - Ultimately, would still need off-site storage, would still have water issues, and each space would still be too small to meet visitor needs
- adjacent properties are zoned for large condo developments, putting access and public visibility of the museum at the current site in jeopardy
- the museum building continues to experience flooding and/or water drain shut offs on a regular basis



2011 Museum Expansion Study



2010 Development Concept and Planning Rationale

Our Challenges

Taking Action!

- Museum Board of Management passed a motion in 2017 to take steps towards addressing these issues:

Be it resolved that the Brockville Museum Board of Management has deemed it necessary to relocate the Brockville Museum, its collection, exhibitions, and staff from 5 Henry Street to a new site, to be determined;

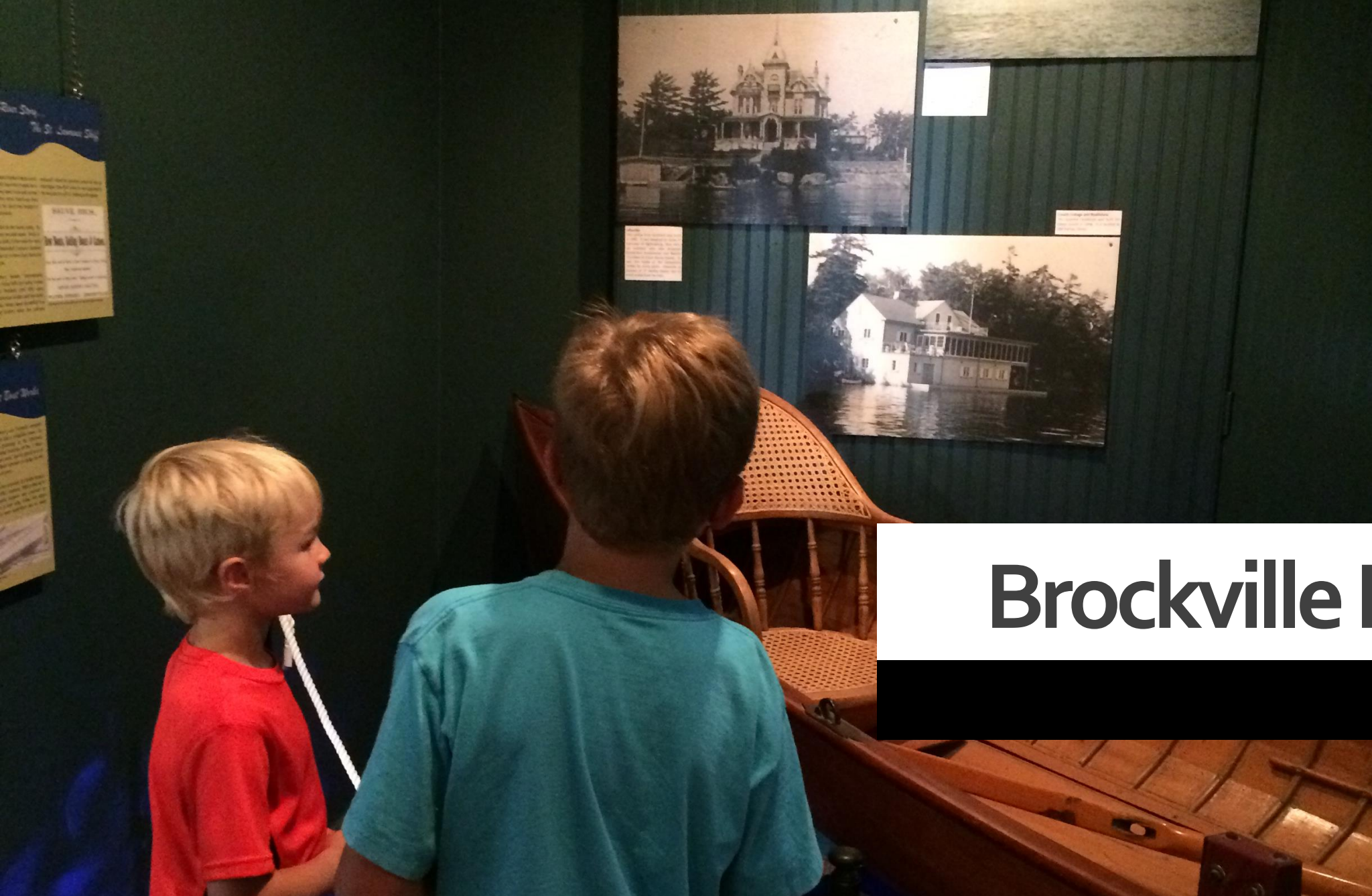
And that planning for the museum's relocation will begin immediately;

And that the target date for the completion of the said relocation be no later than April 2, 2032 (the 200th anniversary of Brockville's incorporation).

- After working with the City of Brockville, a RFP process was held in 2019 to source a consultant to conduct a study to provide the guidance for the size, location, mandate, and operation of a relocated and expanded Brockville Museum
 - **Lord Cultural Resources** was awarded the contract in October 2020
 - Their study, and tonight's meeting, will focus on the criteria for a new site and building



Photo credit: Adam Parker



Brockville Museum

Just imagine...

Just Imagine...

How could we reimagine a Brockville Museum that meets current and future community needs?



Guelph Civic Museum



Grey Roots Museum & Archives (Owen Sound)



Waterloo Regional Museum



Peel Art Gallery, Museum and Archives



Niagara Falls History Museum



Markham Museum



Lennox & Addington Museum & Archives

Just Imagine... a large, bright lobby



Grey Roots Museum & Archives (Owen Sound)



Markham Museum



Niagara Falls History Museum



Lennox & Addington Museum & Archives

Just Imagine... spacious exhibit galleries



Guelph Civic Museum



Waterloo Regional Museum



Niagara Falls History Museum



Museum London

Just Imagine... spacious exhibit galleries... *and maybe even a dedicated art gallery?*



Brockville Museum (temporary exhibit, 2020)



Peel Art Gallery, Museum, and Archives



Orillia Museum of Art and History



Museum London

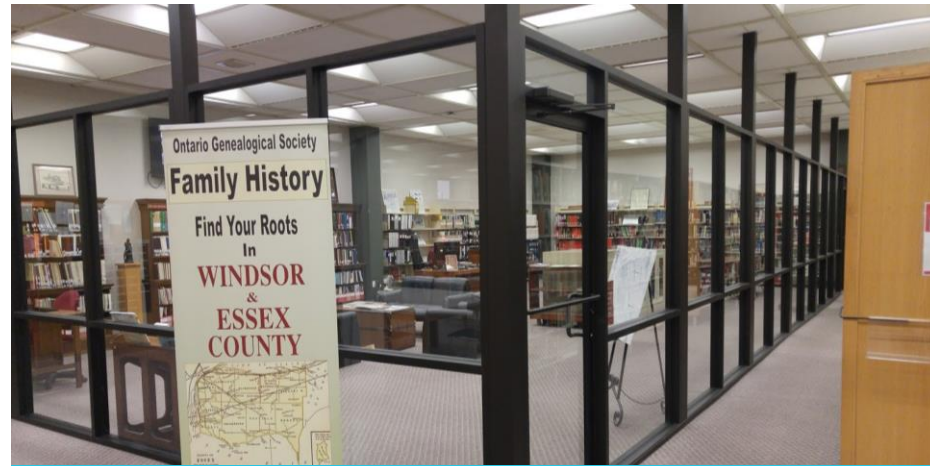
Just Imagine... compact and visible collection storage



Just Imagine... a proper research and archive space for the museum and the Genealogical Society... *and maybe even the municipal archives?*



Lennox & Addington Museum & Archives



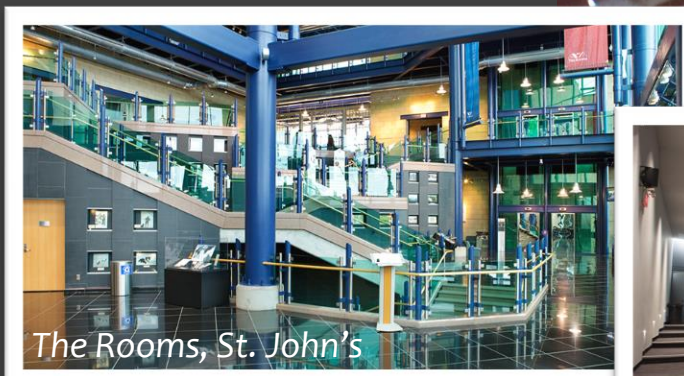
Windsor Public Library Genealogy Room



London Public Library Genealogy Room



Algonquin College – Perth Campus Genealogy Library



The Rooms, St. John's



Museum London



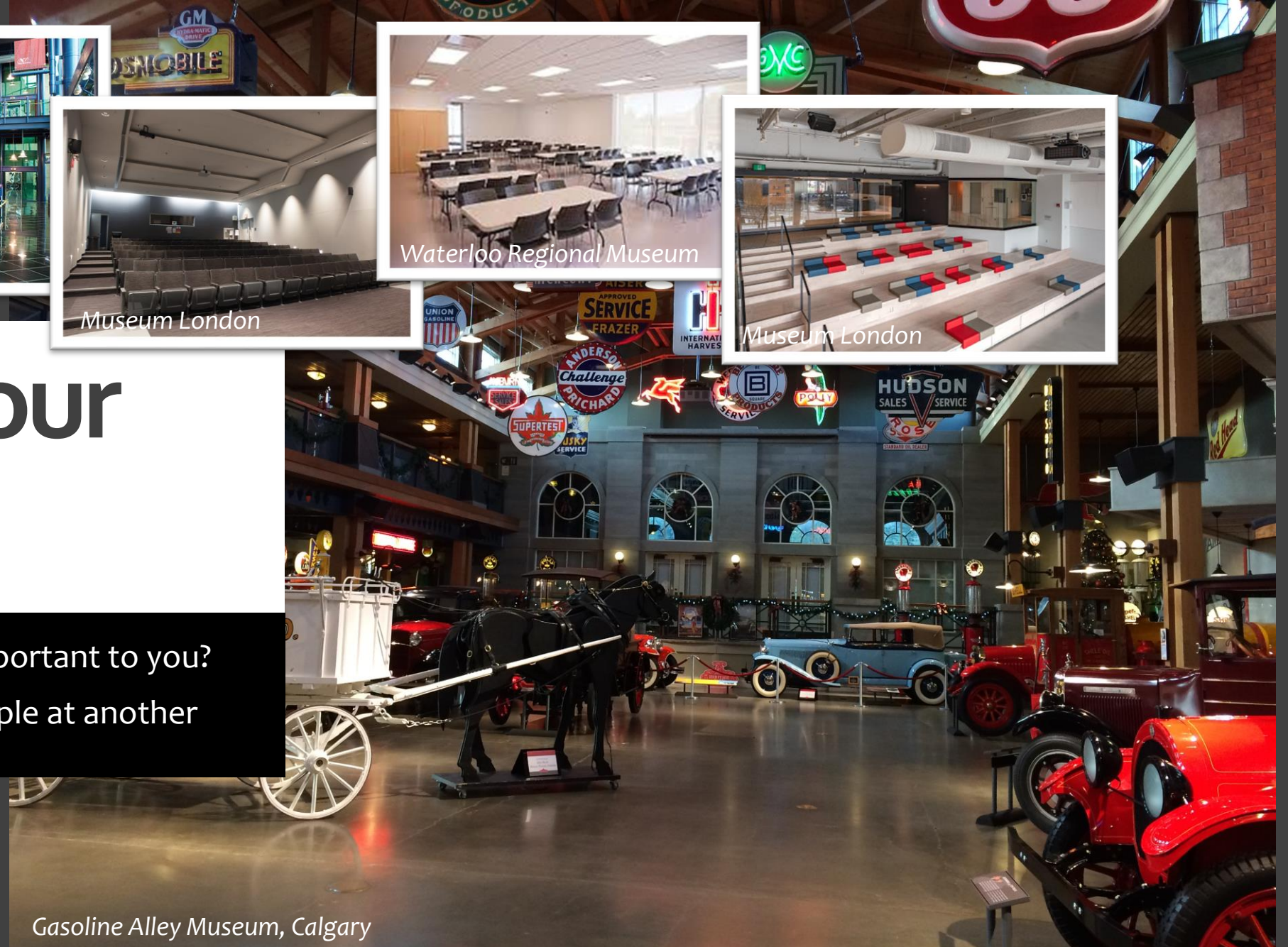
Waterloo Regional Museum



Museum London

What's your vision?

What kinds of spaces are important to you?
Have you seen a great example at another community museum?



Gasoline Alley Museum, Calgary



Thank You

613-342-4397



museum@brockville.com



www.brockvillemuseum.com



BrockvilleMus

