



Brockville Museum | Scavenger Hunt: Brock Trail (Canadian Pacific Loop Line)

One of the more popular sections of the Brock Trail was once part of the Canadian Pacific Railway! Use this 1946 map of the area (a fire insurance plan) to take a stroll along this former rail bed and the neighbourhood to learn more about Brockville's history!

1

What did "B&W" stand for? Find the heritage plaque that talks about the Church Street Railway Station to find the answer.

2

In what year was the James and Anna Russell House built? This house is located on the corner of Abbott and Elm Streets. Look for the blue plaque on the house that acknowledges the history of the property, recognized by Heritage Brockville. *(Please respect private property, and stay on the sidewalk)*

3

How many bridges do you cross getting from one end of Pearl Street West to the other (walking)? There's a reason Pearl Street West dead ends here: the creek is in the way! But that makes for a great walking trail.

4

Prince of Wales School closed in 2018, but in what year did it open as the West Ward School? Go to the Pearl Street side and find the oldest part of the building and look way up to find a stone with the school's name and date.

Demolished 2025

5

How many similarly-styled houses are there between the old school and Dales Avenue? This row of houses on the North side of Pearl Street next to school were built around 1929. They all have the same barn-like roof.

6

How many benches are there in this area where you can sit and watch the ducks in the creek? There is a small side path over to the creek alongside the trail here; take a moment to watch the ducks.

7

All along the trail there are memorial trees, each with a plaque. **What are the three symbols on Gord Di Labio's memorial tree plaque?** This tree is located near Brock Street.

8

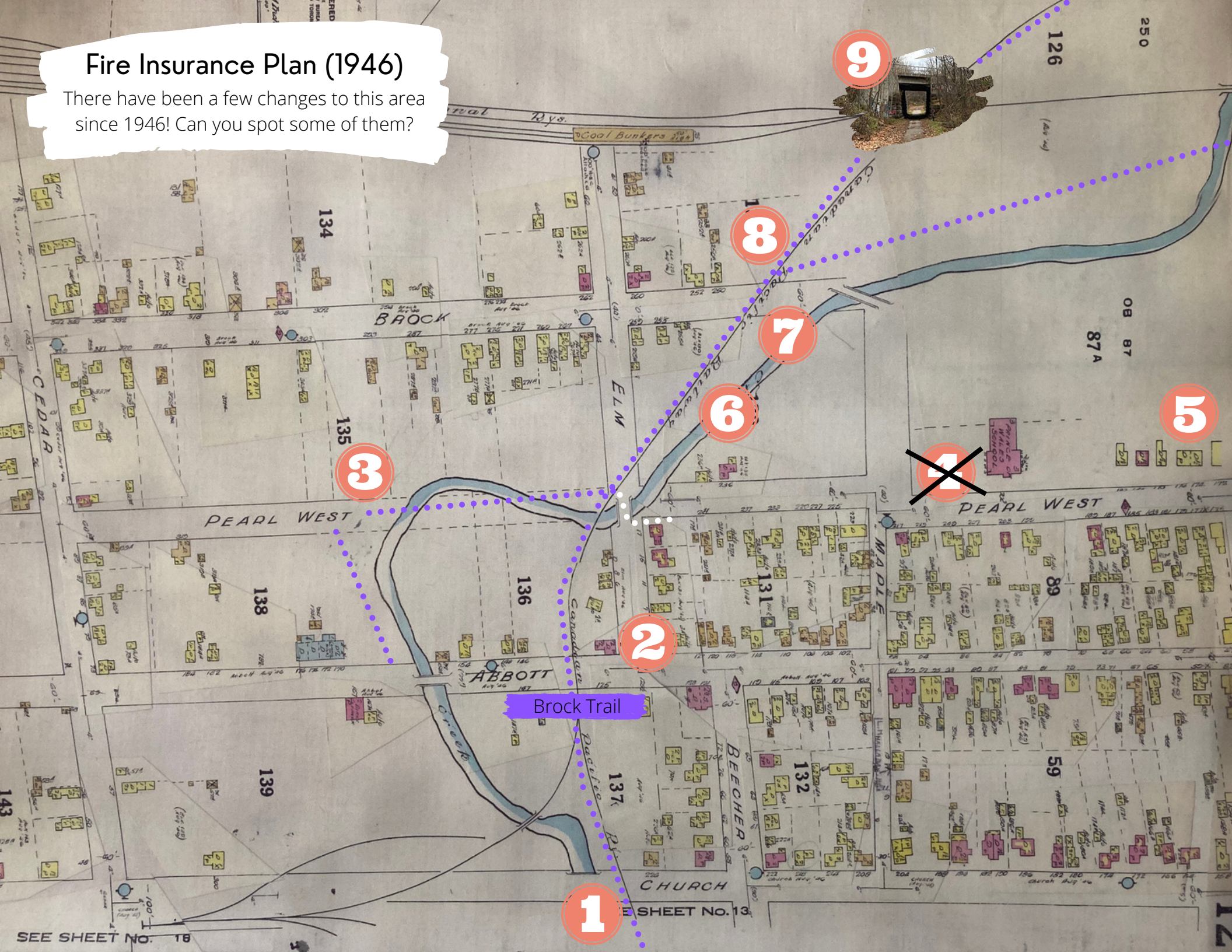
When did the first Grand Trunk Railway train run through Brockville from Montreal? Find the heritage plaque just North of Brock Street for the answer.

9

In what year was this railway overpass updated? See if you can find the date stone on either entrance to the tunnel. *Hint: look up!*

Fire Insurance Plan (1946)

There have been a few changes to this area since 1946! Can you spot some of them?



SEE SHEET NO. 18

Brock Trail

9

8

7

6

3

2

1

X

5